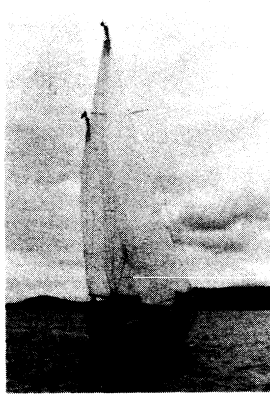
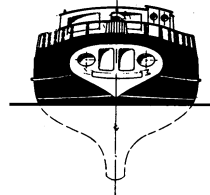
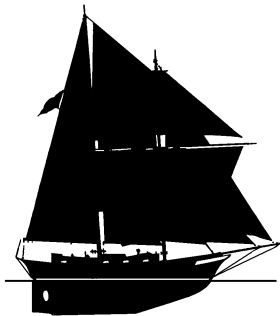


46' Ketch



46' Brigantine



## 46' Ketch Toketee

Design Number 62

1970

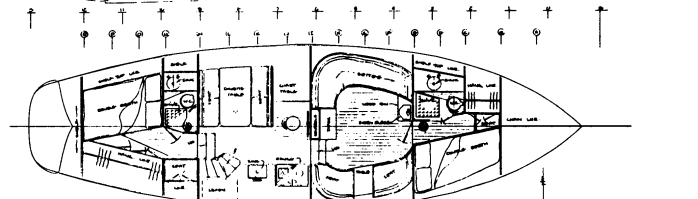
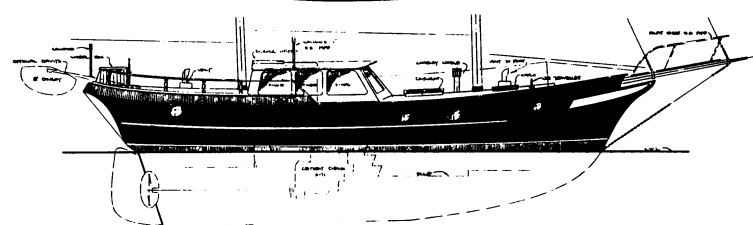
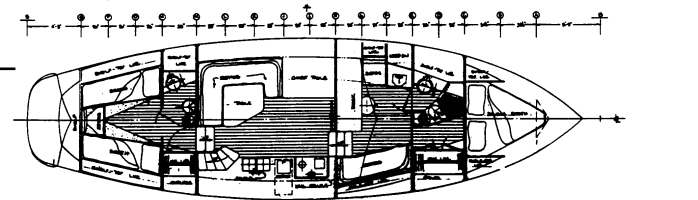
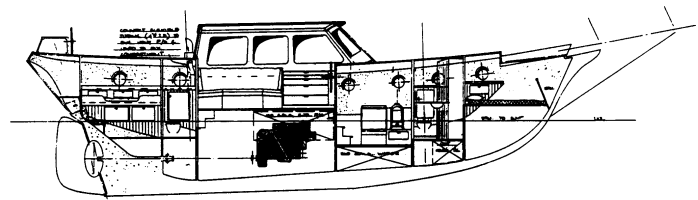
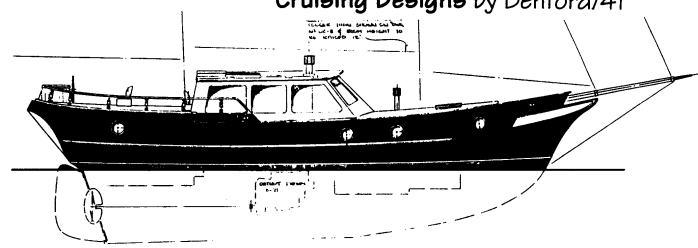
This design is a comfortable and safe passage-maker and a great home afloat for a family. The very livable arrangement has the master cabin and head in the stern, a midships cockpit with full headroom passageway under it to the large galley, saloon, two forward cabins and head.

Designed to be a comfortable and safe passage maker while providing maximum livability for a family. Optional interior arrangements number eight to date, making for a great many alternatives to choose from!

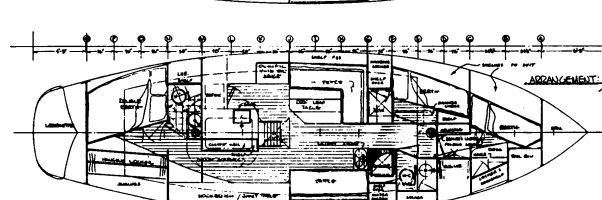
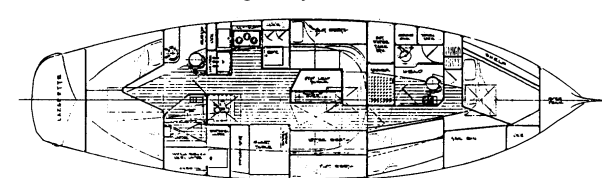
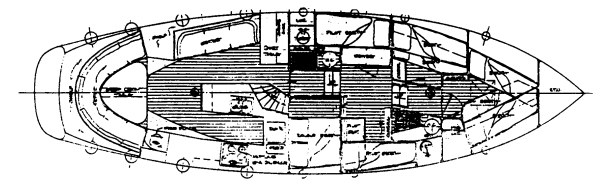
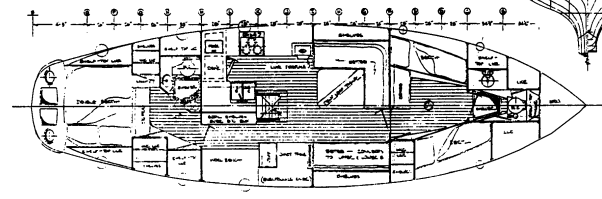
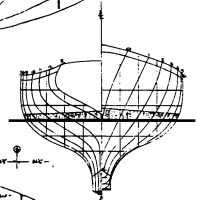
The motorsailers are modifications of the 46' Ketch with inside and outside steering, and raised quarter deck allowing more interior space aft. Staterooms at either end of the vessel provide berths for two with enclosed head with shower, hanging locker and lounge seat. Dinette, galley and steering station with chart table is midships, and large lounging saloon is forward of midships, around a fine fireplace.

The brigantine is an optional rig for our 46' Ketch. She can be sailed as a staysail schooner without the squaresails, or with them as a brigantine. This rig can also be used with several of the different interior arrangements of the basic 46-footer, and study plans and stock plans include all these variations.

Particulars:	Ketch	Motorsailer	Brigantine
Length overall	46'-0"	46'-0"	46'-0"
Length designed waterline	37'-6"	37'-6"	37'-6"
Beam	13'-2"	13'-2"	13'-2"
Draft	6'-0"	6'-0"	7'-3"
Freeboard:			
Forward	6'-1½"	6'-1½"	6'-1½"
Least	3'-9"	3'-9"	3'-9"
Aft	4'-7½"	4'-7½"	4'-7½"
Displacement, cruising trim	42,200 lbs.	42,200 lbs.	43,500 lbs.
Displacement-length ratio	357	357	368
Ballast, pounds	8,000	8,000	15,000
Ballast ratio	19%	19%	34%
Sail area, square feet	1,100	1,100	2,241
Sail area-displacement ratio	14.52	14.52	29.00
Prismatic coefficient	.579	.579	.579
Pounds per inch immersion	1,620	1,620	1,620
Entrance half-angle	23°	23°	23°
Water/Fuel Tankage, Gals.	265/140	260/300	265/140
Headroom	6'-2" to 6'-9"	6'-3" to 6'-9"	6'-2" to 6'-9"



46' Motorsailer Variations



46' Ketch Variations