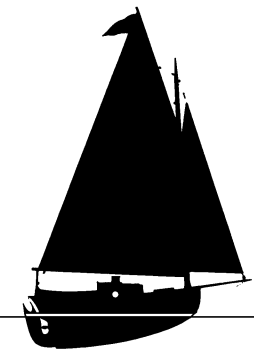
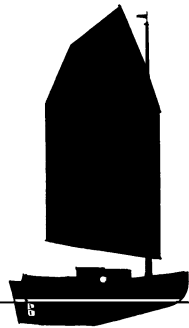




19' Cruising Sloop



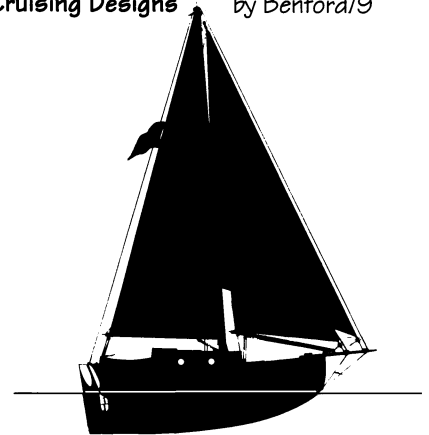
19' Cruising Cat Scrimshaw



19' Lug Sloop



19' Cruising Yawl



26'-3" Cruising Cutter

Scrimshaw

19' Cruising Cat or Sloop
Design number 177
1978

This 19-footer is a longer version of our very popular and successful 17' **Puffin** and **Liberty** versions. Like them there is both a deep and an alternate shallow keel version available, along with a sloop rig, lug sloop rig or yawl rig options.

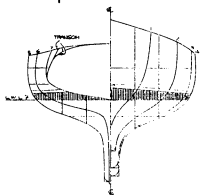
"There's some truth to the saying that smaller boats are harder to design well than larger ones. There is always the temptation to try drawing in more accommodations than the hull can reasonably be expected to hold. Yet, if some modicum of comfort is missing, prospective buyers will be reluctant to plunk down their hard-earned cash. Full-length berths and provisions for a head and galley space are usually deemed minimum requirements.

"The **Scrimshaw 19** succeeds admirably in meeting this design challenge, and should exceed many persons' expectations for good looks. Those committed to pocket cruisers sometimes feel neglected because of the relatively small number of boats to choose from, especially under 20 feet. Jay Benford is one designer who seems to enjoy working for the small guy as well as for the client whose tastes and pocketbook demand the "ultimate maxi."

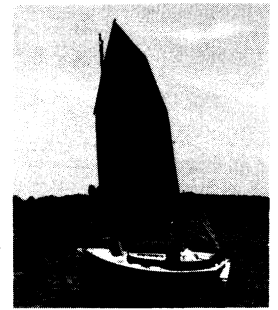
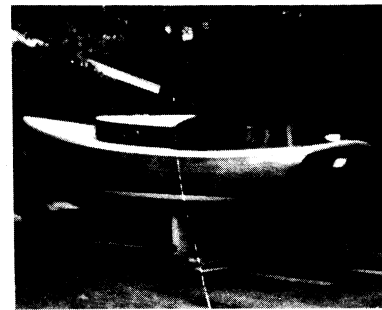
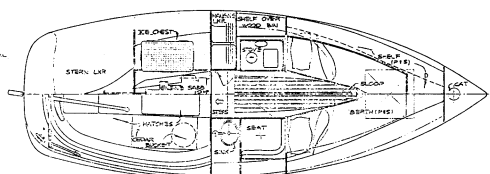
"Jay says that when Lin and Larry Pardey stopped in to visit one day, he showed them the rough draft of the lines for the **Scrimshaw 19**. They both agreed her sections looked much like **Seraffyn's**. She has a long keel and outboard rudder, so she should have the feel of a larger boat. This will be especially true considering her designed displacement of 4,120 pounds. Benford cautions readers of his plans that "cruising displacement" means he has included the weight of fuel and water, crew and gear....

"Comfort seems to have been the watchword in designing the **Scrimshaw 19**, and this is clearly evident in the cockpit. The coamings are 13 to 17 inches high and are sloped outboard to prevent sore backs. The footwell width is calculated to be just right for bracing a foot from the other side. A hatch in the cockpit floor provides ready access to the small inboard diesel engine."

Cruising World



19' Scrimshaw

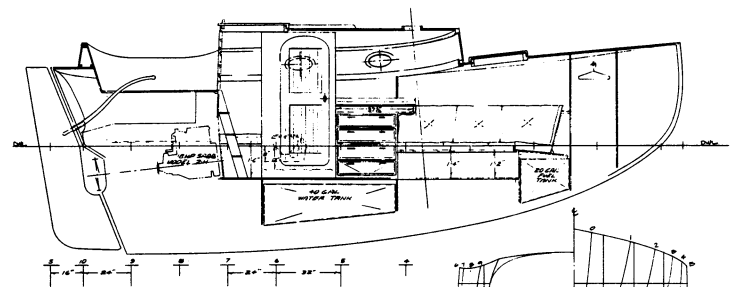


19' Lug Sloop

26'-3" Cruising Cutter

Design number 187
1979

A modern evolution of the English Channel cutters, like them the 26'-3" Cruising Cutter is fast, stiff and weatherly. Her stability curve shows that she has a very long range of positive stability with minimal negative area — all indicative of a stiff and powerful boat with the power to carry sail in a blow and be able to sail her way out of trouble. She has standing headroom in a practical and roomy layout, whether living aboard or voyaging.



26'-3" Cruising Cutter

