

33' AUXILIARY
 FOR: RON WILLIAMS
 DATE: 7 DECEMBER 1993
 SCALE: 1"=1'-0"
 SAIL PLAN & ARR.MT.
 LMA 33'-0"
 LWS 26'-0"
 BEAM 10'-6"
 DRAFT 4'-6"
 FREEBOARD:
 FWD 5'-6"
 1-EAST 2'-9 3/4"
 AFT 4'-5 1/4"
 BENFORD DESIGN GROUP
 ST. MICHAELS, MD 21649
 (410) 745-3836
 324-A-2 T.W.B.

33' Pilothouse Cutter

Design Number 326

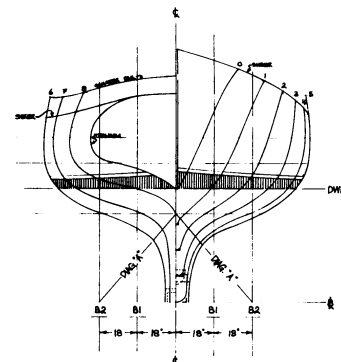
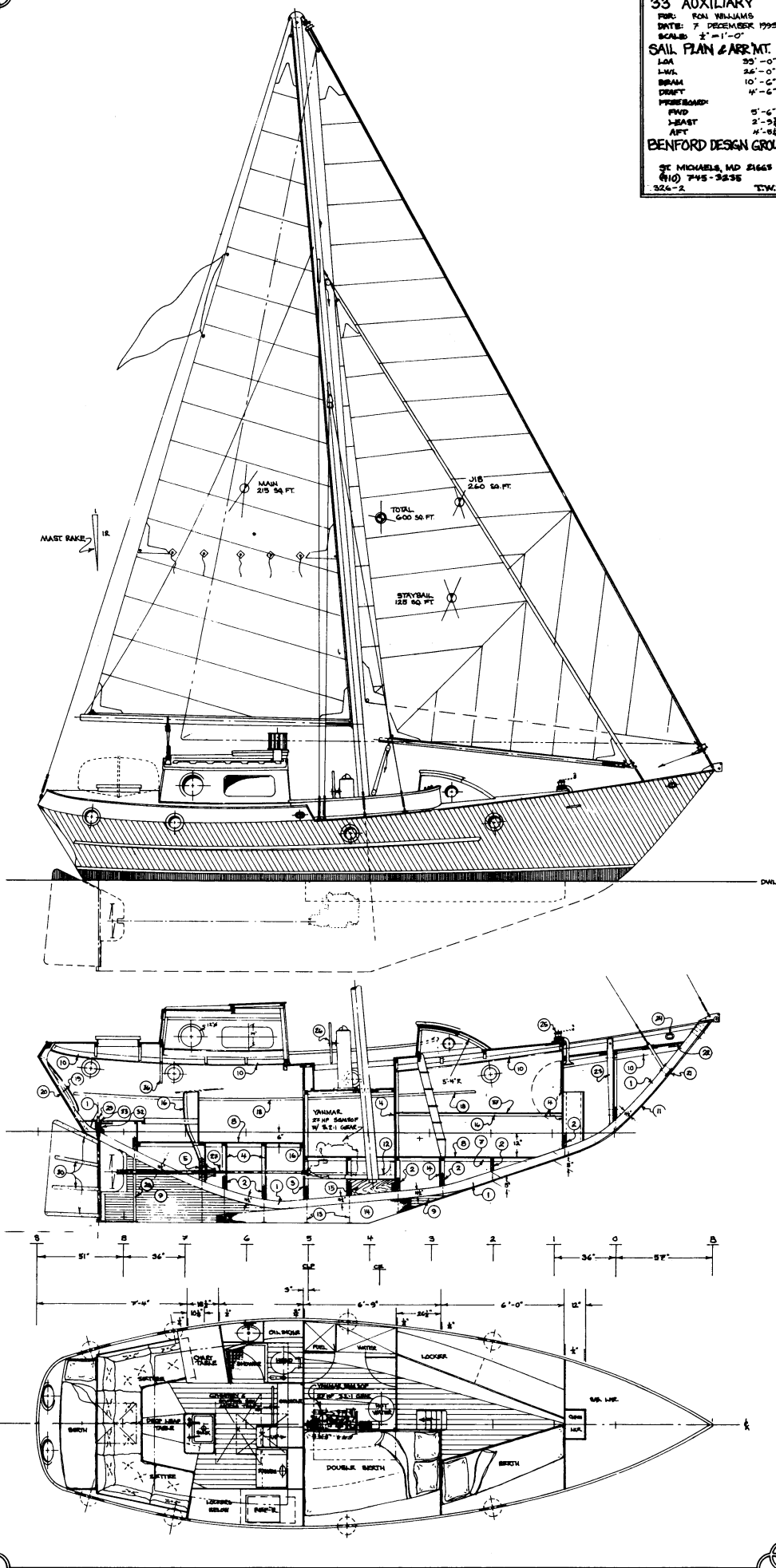
1993

Often someone calls and says, "I like your design for this boat, but...."

That "but" often leads us off into the custom design territory. However, we can sometimes modify an existing design in a way that satisfies the needs of the clients and creates an interesting new boat in the process.

This design is just one of those instances. She carries the best features of *Bakea's* Great Cabin layout from the the Benford 30 series. She also has an elegant spoon bow like *Antonia* plus the heart shaped transom and wineglass section hull form of the *Belle Amie* version. The net result is the creation of a shapely new classic sailing yacht.

Because of the way this design was done, by using parts of other designs to create a new one, her plan set combines sheets from other plan sets to be included with the stock plans. This lets us be creative in doing custom work by doing part of a new design and only charging for the partial custom design actually done.



Particulars:

	33	35
Length overall	33'-0"	35'-3"
Length design waterline	26'-0"	30'4 1/2"
Beam	10'-6"	10'-2 1/4"
Draft	4'-6"	4'-6"
Freeboard:		
Forward	5'-6"	4'-3 3/4"
Least	2'-9 3/4"	2'-2 1/2"
Aft	4'-5 1/4"	3'-1 1/4"
Displ., cruising trim, lbs.	13,265	19,000
Displacement-length ratio	337	303
Pounds per inch immersion	840	1,030
Ballast, lbs.	4,000	6,890
Ballast ratio	30%	36%
Sail area, Sq. Ft.	600	621
Sail area-displacement ratio	17.13	13.95
Prismatic coefficient	.54	.565
Entrance half-angle	24°	25°
Water tankage, Gals	88	160
Fuel tankage, Gals.	59	70
Headroom	6'-6"	6'-2"
GM	3.98'	2.8'