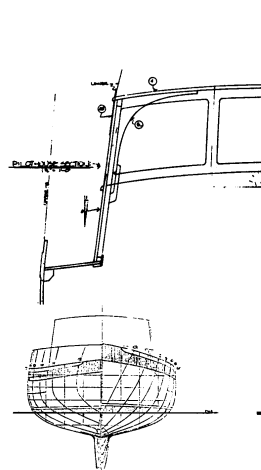
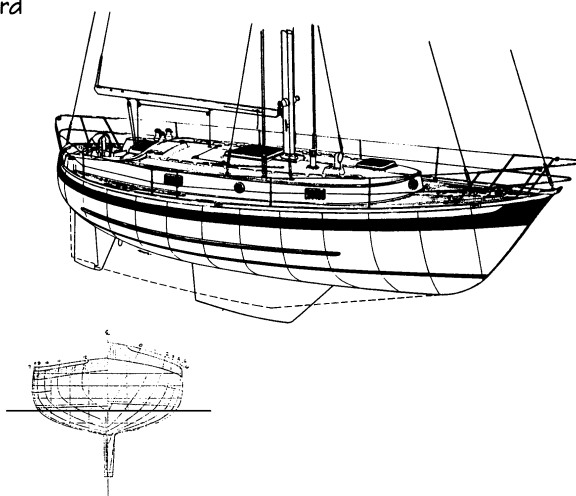
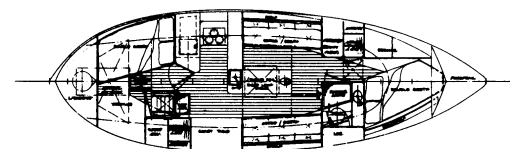
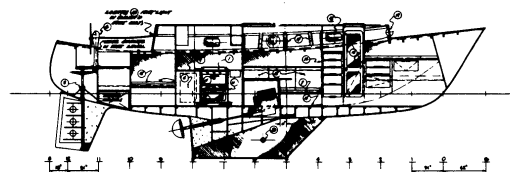
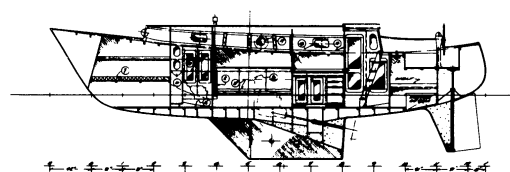


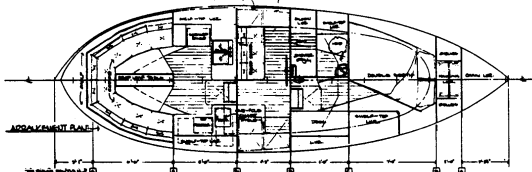
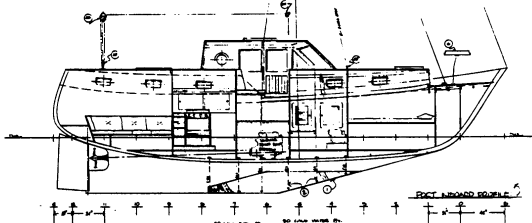
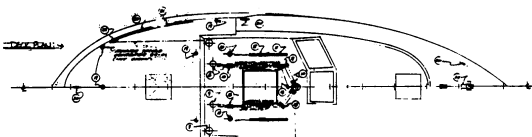
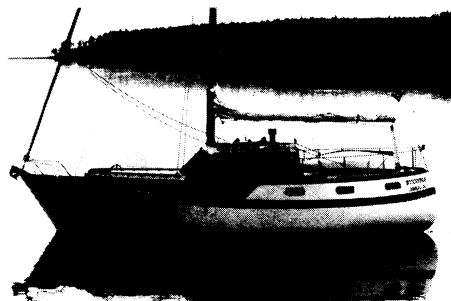
Cape Scott 36



Cape Scott 36 Pilothouse



Cape Scott 36



Cape Scott 36 Pilothouse

## Offshore Double Enders

### Cape Scott 36, Cascade Classic 39 & 40' Cutter & Pilothouse Cutter

Designs Number 162, 222, 159, & 166  
1977, 1984, 1977 & 1977

These are well proven seaboats, with many voyages behind them. They are modern, medium-displacement cruisers. They're fast, stiff, weatherly and easily driven, yet their long, shallow keels make for simple solutions to maintenance in far-off ports. Their accommodations combine the best of the most popular and practical cruising boats. The roomy layouts include double staterooms fore and aft (a convertible settee in the pilothouse version), large storage in the ends, a good working chart table, large galley, head with shower, and a large saloon amidships.

The 39 is available as a molded 'glass hull and deck (or finished boat) and the 36

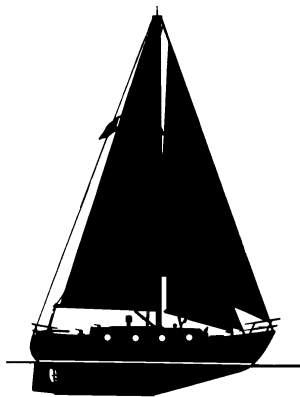
and 40 are done as one-offs with choices of either an aft cockpit or pilothouse version. The pilothouse has been adapted onto the 39 for those wanting a 'glass kit.

The 36 has an alternative fin keel, with a bit deeper draft, for those in pursuit of the last bit of light air performance. The pilothouse 36 has a roomy great cabin which makes a comfortable saloon. This 36 has made several single-handed trips from Puget Sound to Alaska.

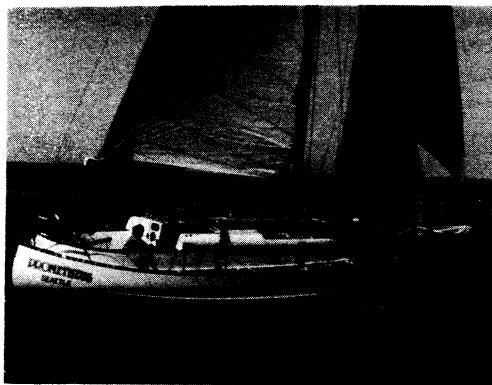
These offshore double enders are a good size for a couple or a family to live and cruise aboard. They are of a size that is roomy enough to carry long term stores and not be crowded for daily living.

#### Particulars:

	36	36PH	39	40	40PH
Length overall	36'-0"	36'-0"	39'-0"	40'-0"	40'-0"
Length designed waterline	31'-0"	31'-0"	34'-0"	35'-0"	35'-0"
Beam	12'-0"	12'-0"	12'-4"	12'-4"	12'-4"
Draft	5'-4"	4'-6"	5'-0"	5'-0"	5'-0"
Freeboard:					
Forward	5'-6"	5'-6"	5'-6"	5'-6"	5'-6"
Least	3'-6"	3'-6"	3'-3"	3'-6"	3'-6"
Aft	4'-3"	5'-6"	4'-3"	4'-3"	4'-3"
Displacement, cruising trim, lbs.	17,000	18,180	23,275	23,900	23,900
Displacement-length ratio	255	272	264	249	249
Ballast, lbs.	6,000	6,000	8,000	8,500	8,500
Ballast ratio	35%	33%	34%	36%	36%
Sail area, square feet	725	725	848	871	849
Sail area-displacement ratio	17.55	16.78	16.64	16.80	16.38
Prismatic coefficient	.556	.542	.557	.557	.557
Pounds per inch immersion	1,185	1,185	1,367	1,380	1,380
Entrance half-angle	25°	25°	24¼°	22°	22°
Tankage, water/fuel, gals.	84/60	100/100	200/100	100/100	119/300
Headroom	6'-8"	6'-5"	6'-8"	6'-8"	6'-5"



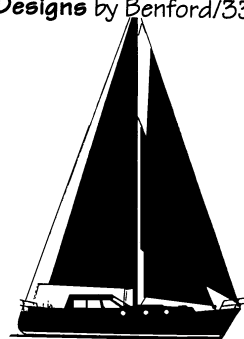
Cascade Classic 39



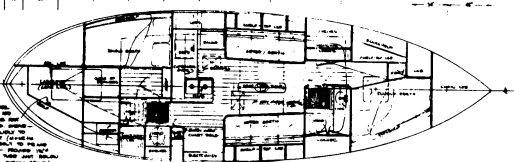
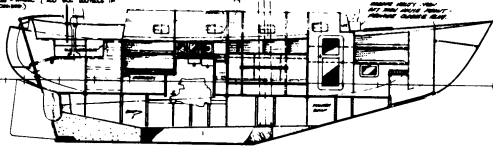
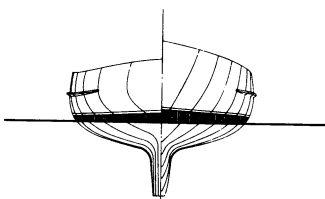
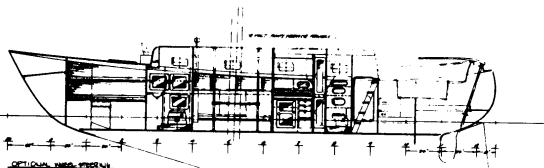
Cruising Designs by Benford/33



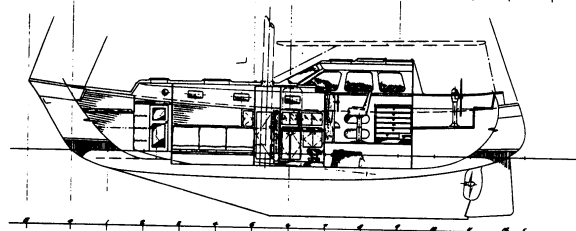
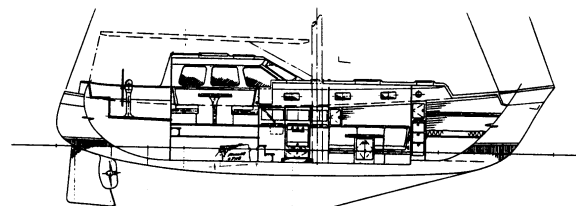
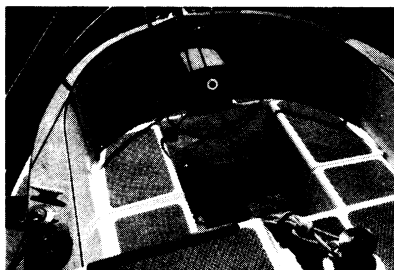
40' D. E. Cutter



40' Pilothouse Cutter

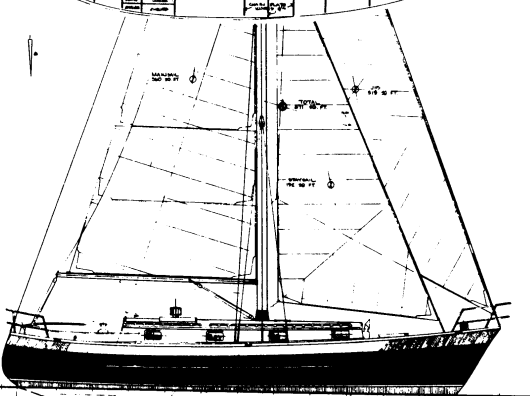
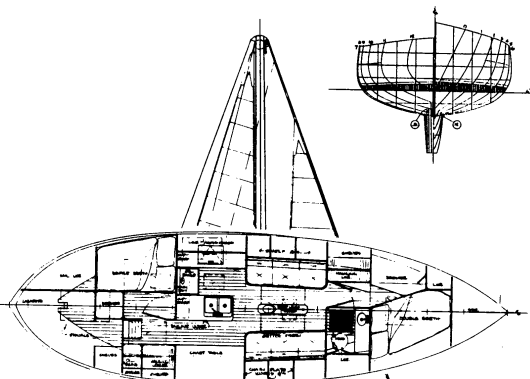


Cascade Classic 39

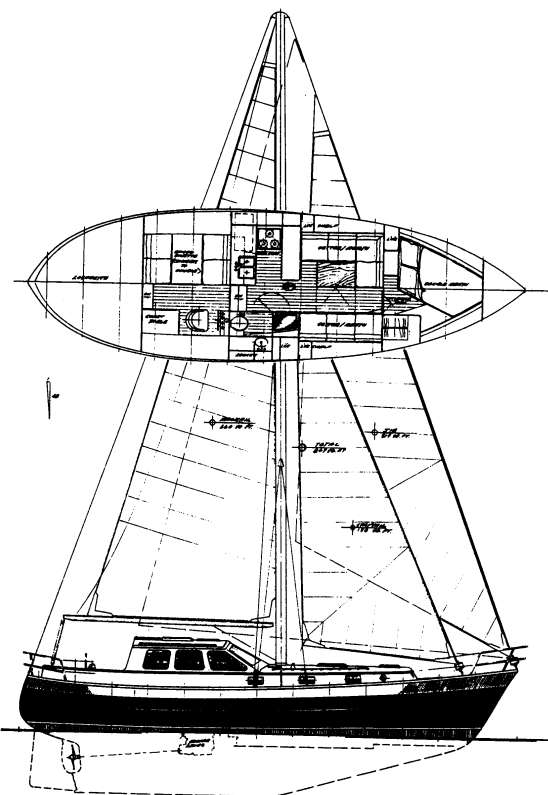
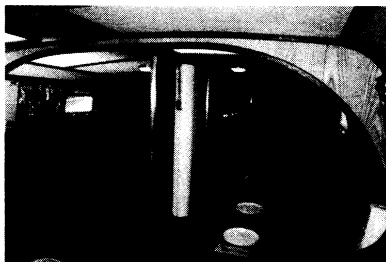


The cockpit of the Cascade Classic 39 (above) shows how her seatbacks are tall and well shaped and sloped for the comfort and safety of the crew.

Her galley and saloon (below) show the spacious and comfortable spaces found inside to make life pleasant for her crew.



40' D. E. Cutter



40' Pilothouse Cutter