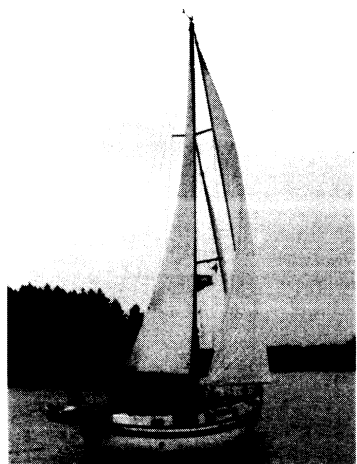
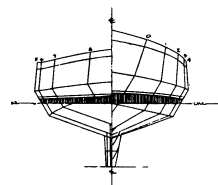


Corcovado

37' Pilothouse Cutter or Ketch
Design Number 125 & 209
1975 & 1983



Corcovado is a very successful marriage of an efficient cruising cutter and the traditional motorsailer. She sails like a thoroughbred cruiser yet provides the comforts and amenities of a traditional motorsailer. These include private staterooms fore and aft, roomy social area, galley and head, all amidships, and an extremely well lit pilothouse with settees both sides of the steering station. All of this combined into a handsome and salty package.

A larger sister (in hull form) to our 35' trawler **Strumpet**, with lead ballasted keel, she has extensive interior accommodations for a vessel her size. This is enhanced by the extended trunk cabin, yet does not detract from the spacious self-draining cockpit aft from

where fishing and working the ship in more pleasant weather will be most enjoyable, in this alternate version.

The second version of this hull design is a double chine hull form designed for building in steel. It could also be used for aluminum with the construction plans modified.

After a trip to Alaska and back in the summer of 1980, **Corcovado's** owner said, "The design you did on **Corcovado** pleases us very much....We have sailed with jib, staysail and main and have hit as high as 8½ knots. I feather the prop and can pick up another knot or two if we are moving in a 20 to 25 mph wind....With all gear and supplies on board our waterline is right on as computed by you."

Particulars:

Length overall	37'-0"
Length designed waterline	33'-0"
Beam	12'-4"
Draft	5'-0"
Freeboard:	
Forward	5'-9"
Least	3'-3"
Aft	4'-3"
Displacement, cruising trim	28,450 lbs.
Displacement-length ratio	353
Ballast	7,100 lbs.
Ballast ratio	25%
Sail area	800/900 ft. ²
Sail area-displacement ratio	13.73/15.45
Prismatic coefficient	.619
Pounds per inch immersion	1,468
Entrance half-angle	29°
Water tankage	180 Gals.
Fuel tankage	200 Gals.
Headroom	6'-3"
GM	4.3'

