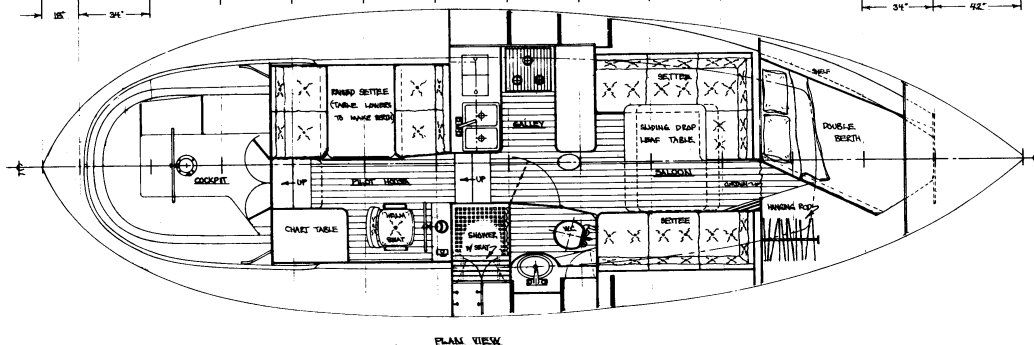
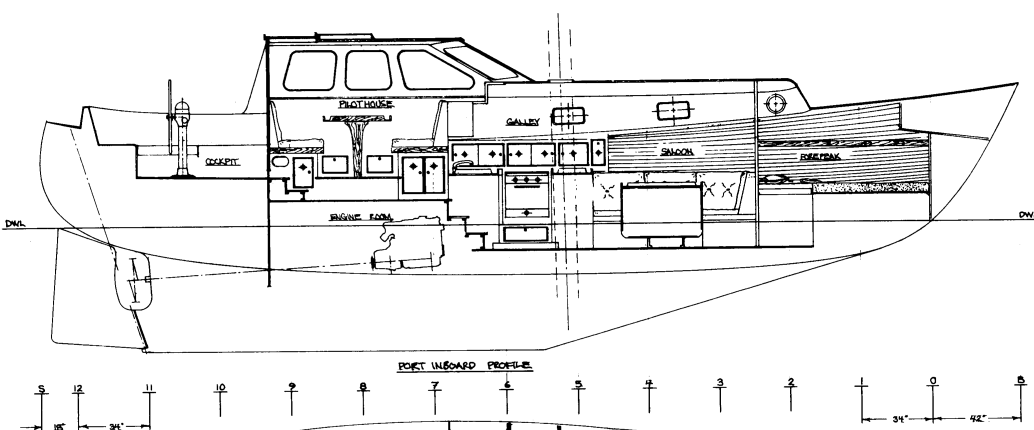
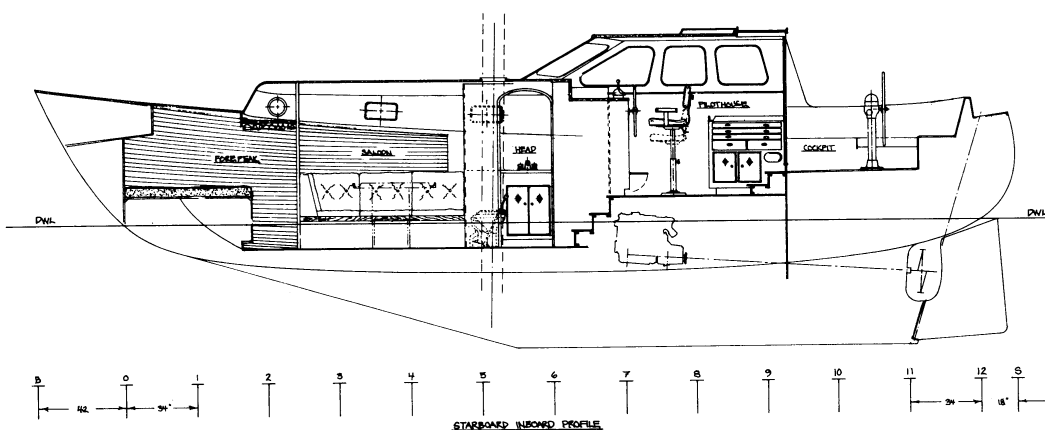
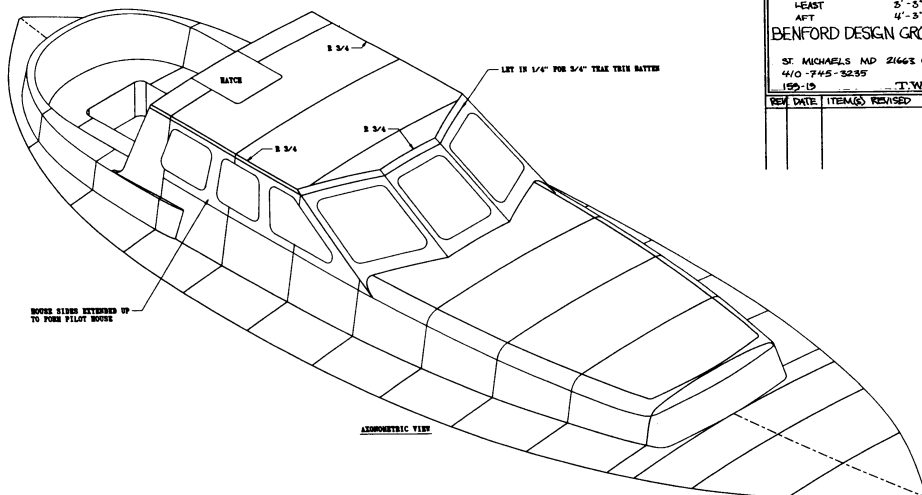


Cascade Classic 39 Pilothouse Cutter

Design Number 159

1977 & 1995

39 PH. CUTTER	
FOR: CASCADE YACHTS INC.	
DATE: 22 MAY 1995	
SCALE: 1" = 1'-0"	
ARRANGEMENT	
LOA	39'-0"
LWA	34'-0"
BEAM	12'-4"
DRAFT	5'-0"
FREEBOARD:	
FWD	5'-6"
LEAST	3'-3"
AFT	4'-3"
BENFORD DESIGN GROUP	
ST. MICHAELS MD 21666 USA	
410-745-3235	
1995-15	
REV	DATE
1	ITEMS
2	REVISED



After producing many of the original trunk cabin versions, the builders took up one of the requests for a pilothouse version. (See first version on p. 32 & 33.)

The cockpit is virtually identical to the original 39'. It has high and well-sloped seatbacks which are very comfortable for long periods of time. The depth creates a feeling of security of being "in" the boat rather than perched on it. There are huge storage spaces under the cockpit.

The pilothouse has a raised dinette which converts to a double berth. It's elevated with good visibility, so the crew can see both where they're going and what's around them at anchor. The helm seat is at the inside steering station on the starboard side of the pilothouse. Just aft of it is the one-fold chart table. (One-fold on standard sized charts.)

Under the pilothouse is the engine room, fuel tanks, pumps and batteries. Hatches in the pilothouse sole give ready access for checking the oil and servicing the equipment. A couple more steps down from the pilothouse is the galley to port and the head to starboard. The galley has good working areas and storage, both under the counters and in overhead cabinets. The head has a separate shower stall. (The whole compartment won't have to be wiped dry after a shower.) Outboard of the shower seat is an oilskin locker, draining into the shower sump.

These offshore double enders are a great size for a couple or a family to live and cruise aboard. They are of a size that is roomy enough to carry long term stores and not be too crowded for daily living.

Particulars:	39PH	41
Length overall	39'-0"	41'-0"
Length designed waterline	34'-0"	36'-0"
Beam	12'-4"	14'-0"
Draft	5'-0"	5'-0"
Freeboard:		
Forward	5'-6"	6'-0"
Least	3'-3"	3'-6"
Aft	4'-3"	5'-11"
Displ., cruising trim, lbs.	23,275	27,675
Displacement-length ratio	264	265
Ballast, lbs.	8,000	8,300
Ballast ratio	34%	32%
Sail area, square feet	848	949
Sail area-displacement ratio	16.64	17.01
Prismatic coefficient	.557	.557
Pounds per inch immersion	1,367	1,552
Entrance half-angle	24 1/4°	22 1/4°
Tankage, gals.: water/ fuel	200/200	301/128
Headroom	6'-4" to 6'-8"	6'-10"